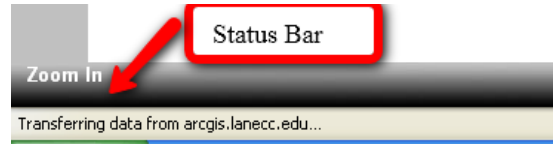
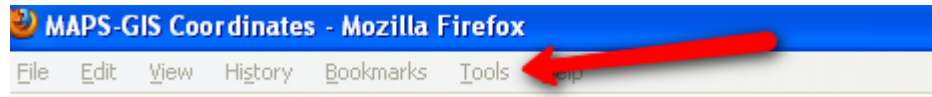


Setting the Status Bar in **Mozilla** to show longitude and latitude

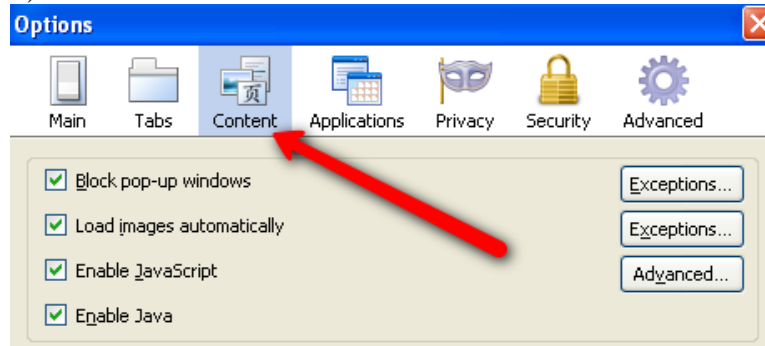
Typical the status bar will not show the latitude and longitude of the Web-based GIS.



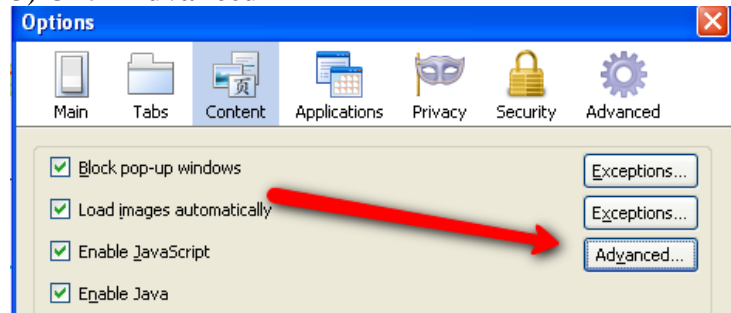
1) To change this, click tools → then choose **Options** in the dropdown menu.



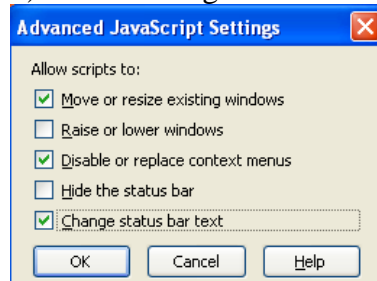
2) Choose **Content** and make sure all the boxes below are checked.



3) Click **Advanced**



4) Check Change status bar text → Click OK.



5) Now the status bar will show the location of the mouse.

